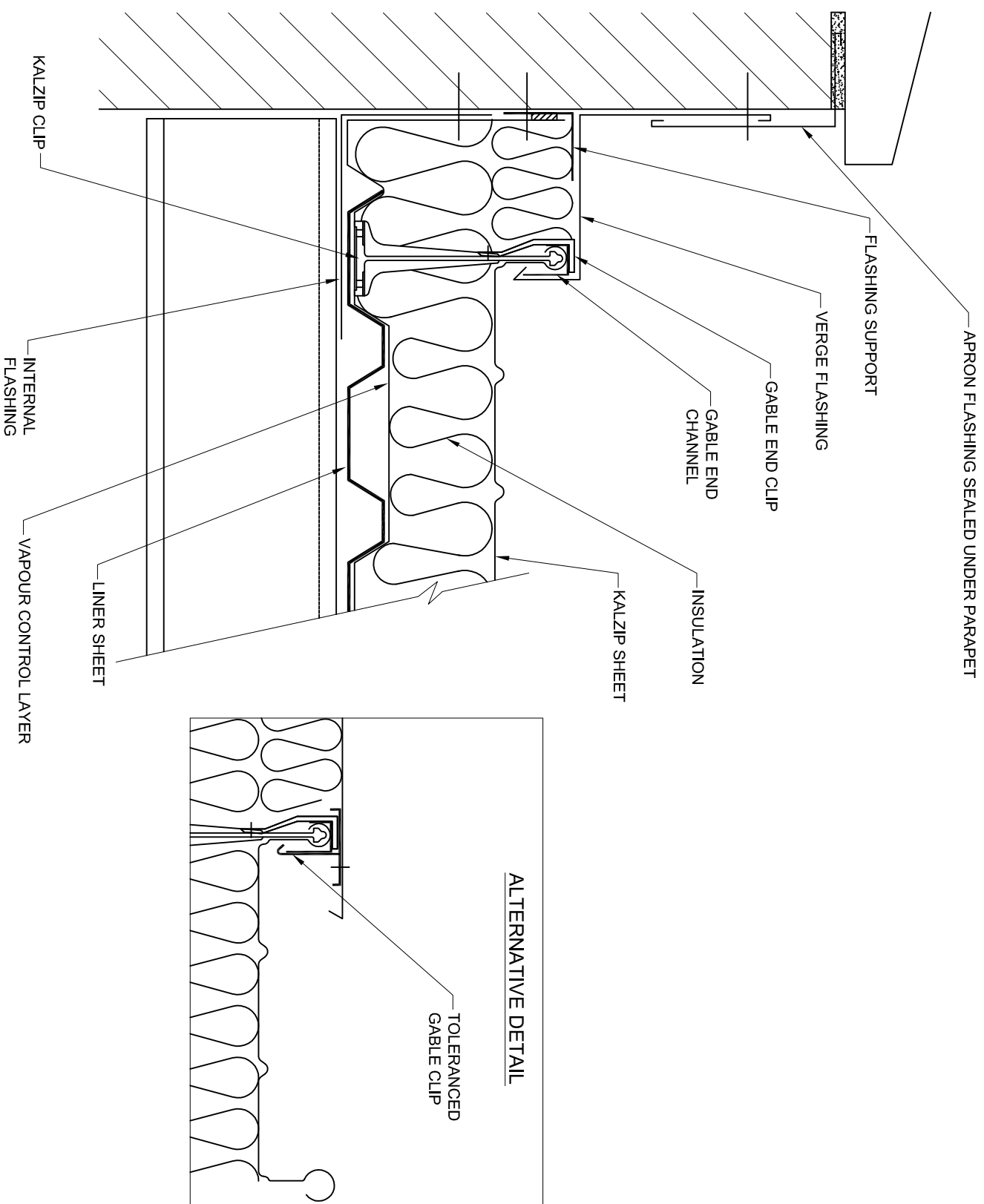


Notes

1. All Dims in mm Unless Otherwise Stated
2. Do Not Scale From This Drawing
3. Isolate All Dissimilar Materials With Barrier Tape
4. If in Doubt, ASK



This drawing is copyright and is issued on the express condition that it is not to be copied or disclosed by or to any unauthorised person or firms without prior consent in writing from Kalzip.

Haydock Lane, Haydock, St. Helens
MERSEYSIDE, WA11 9TY

Tel: 01942 295 500
Fax: 01942 295 508



A Tata Steel Enterprise

Kalzip Ltd

Project:

Double Skin Constructions

Client:

Kalzip Ltd.

Title:

Double Skin Abutment Verge Detail To Parapet

Scale: 1:5	Date: 20/07/05	Drawn: KRT	Checked:
---------------	-------------------	---------------	----------

Dwg No.	Rev:
KAL-0-DS-L-4-002	F